



中国科学技术大学
University of Science and Technology of China



认知智能全国重点实验室
STATE KEY LABORATORY OF COGNITIVE INTELLIGENCE

ICML 2024 Challenges on Automated Math Reasoning

Zhiyuan Ma^{1,2}, Jiayu Liu^{1,2}, Zhenya Huang^{1,2}, Qi Liu^{1,2}, Jing Sha^{2,3}, Shijin Wang^{2,3}, Enhong Chen^{1,2}

¹Anhui Province Key Lab. of Big Data Analysis and Application,
University of Science and Technology of China

²State Key Laboratory of Cognitive Intelligence

³iFLYTEK

Reporter: Zhiyuan Ma

Outline

1

Background

2

Idea

3

Solution

4

Conclusion

Self-introduction

➤ Team **Cogbase**

➤ Affiliation

➤ [BDAA-BASE](#)

- BASE Group is part of the Anhui Province Key Laboratory of Big Data Analysis and Application of School of Computer Science and Technology, University of Science and Technology of China (USTC).
- Our research mainly focuses on applying BigData and AI techniques to education and science. Some of the topics include: educational resource understanding, cognitive diagnosis and student modeling, personalized education services, etc.

➤ 1st place in Track1-1: Autoformalization

➤ 1st place in Track1-2: Auto-informalization

➤ 2nd place in Track2: AUTOMATED THEOREM GENERATION AND PROVING

➤ 2nd place in Track3: AUTOMATED OPTIMIZATION PROBLEM-SOLVING WITH CODE

Background

➤ Background

- Mathematics has always been regarded as the touchstone of artificial intelligence
- Autoformalization (and its reverse direction) is the core building block of developing effective formal mathematical reasoning systems.
- The Autoformalization & Auto-informalization Challenge is thus to encourage the community to investigate advanced methods or models that provide more precise formal-informal proof alignment and translation.

Background

- Task
 - Track 1-1: Autoformalization
 - Given a problem statement and its proof in natural language, generate the corresponding formal statement and proof.
 - Input & Output: (informal statement, informal proof) → formal_proof
 - Track 1-2: Auto-informalization
 - Given a formal statement and its formal proof, generate the corresponding natural language statement and proof.
 - Input & Output: formal_proof → (informal_statement, informal_proof)
- Data
 - name: the name of the math problem;
 - informal statement: the natural language statement of the problem;
 - informal proof: the natural language answer to the problem;
 - formal proof: the Lean 3 formal statement and solution to the problem.

Background

➤ Example

```
{  
  "problem_name": "correct_by_msg__ELEM_theorem_proving_1st_grade_15_round2",  
  
  "informal_statement": "If a two-digit number is formed with 4 in the tens place and 3 in the ones place, prove that the number is 43.",  
  
  "informal_proof": "We know that the number in the tens place represents tens and the number in the ones place represents ones. So, if 4 is in the tens place, it represents  $4 * 10 = 40$ . If 3 is in the ones place, it represents 3. So the total number is  $40 + 3 = 43$ .",  
  
  "formal_proof": "def ten (n : ℕ) : ℕ := n * 10\ndef one (n : ℕ) : ℕ := n\ntheorem two_digit_number : ten 4 + one 3 = 43 :=\nbegin\n  have h1 : ten 4 = 40, by refl, \n  have h2 : one 3 = 3, by refl, \n  rw [h1, h2],\n  exact add_comm 3 40\nend."  
}
```

➤ Evaluation

- 1-1: Rouge-L, BLUE, Lean 3 formal proof code passrate
- 1-2: Rouge-L, BLUE

Outline

1

Background

2

Idea

3

Solution

4

Conclusion

Idea

- Utilizing GPT-4's code generation capabilities to harness its potential for generating Lean3 code.
- To better utilize the data provided by the training set:
 - Using RAG (Retrieval-Augmented Generation) technology to retrieve similar problems as examples
 - Constructing an Agent to summarize experiences from input-output pairs
- Verify the quality of generated code from multiple perspectives

Outline

1

Background

2

Idea

3

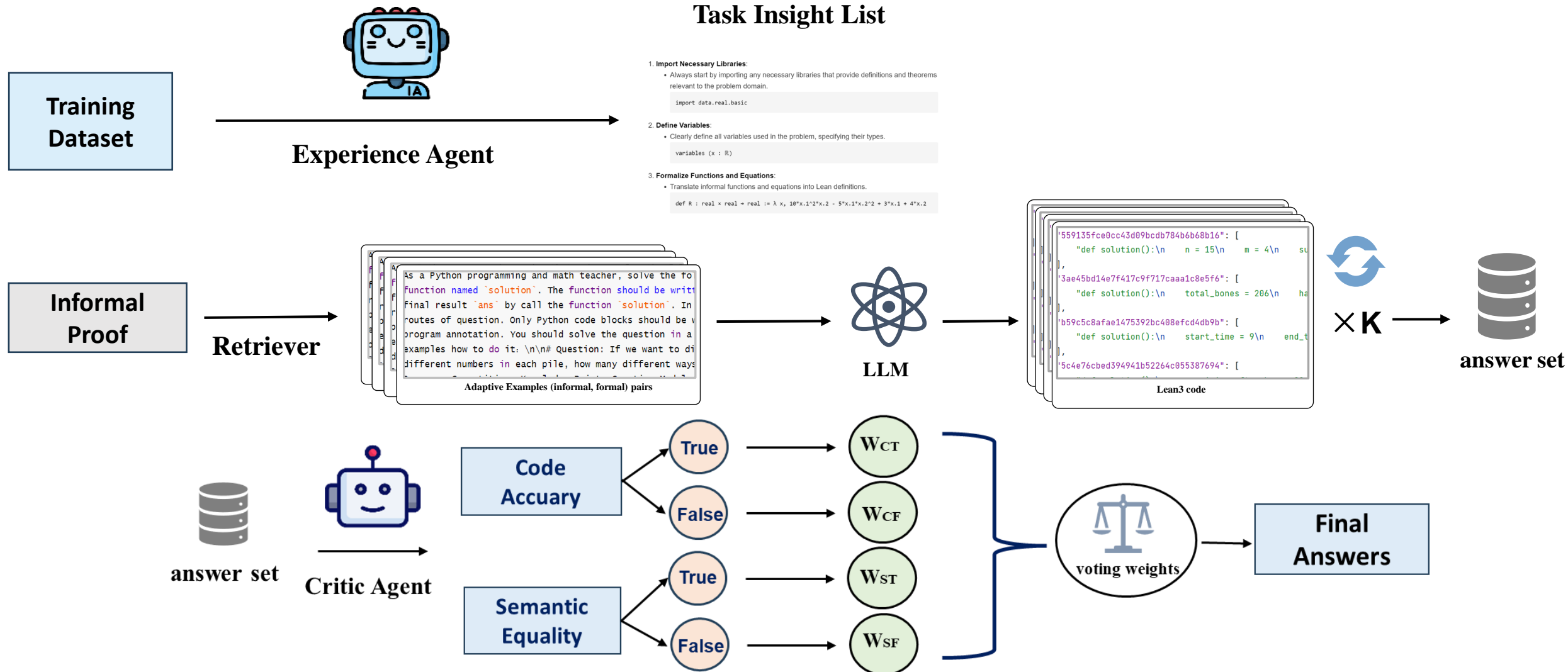
Solution

4

Conclusion

Track 1-1 Solution

➤ Framework

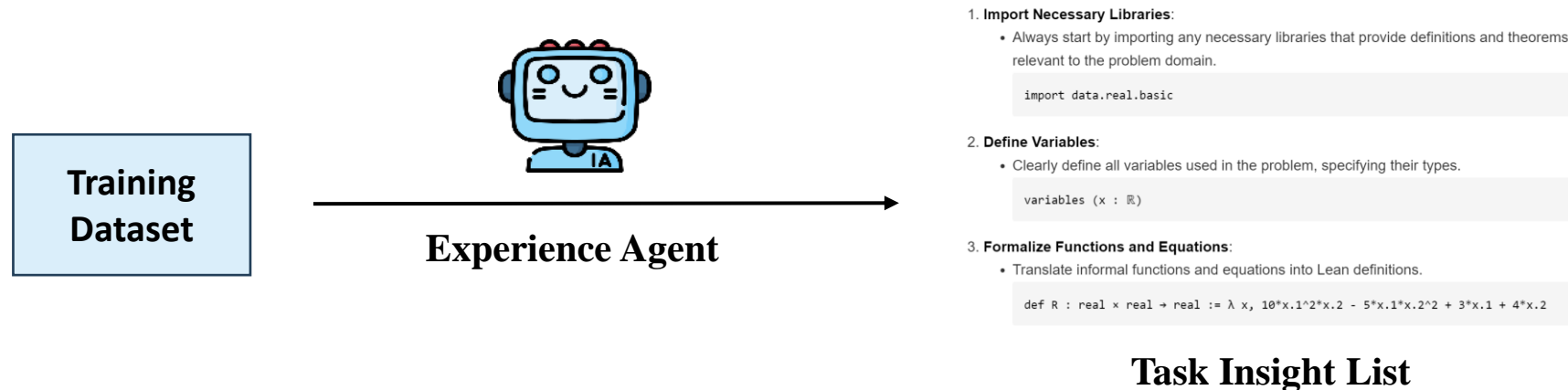


Solution

➤ Details

➤ Summarize Experiences

- Summarize experiences and insights from the training dataset
- The insight is an abstraction of the task, as well as its patterns, templates, and common pitfalls.

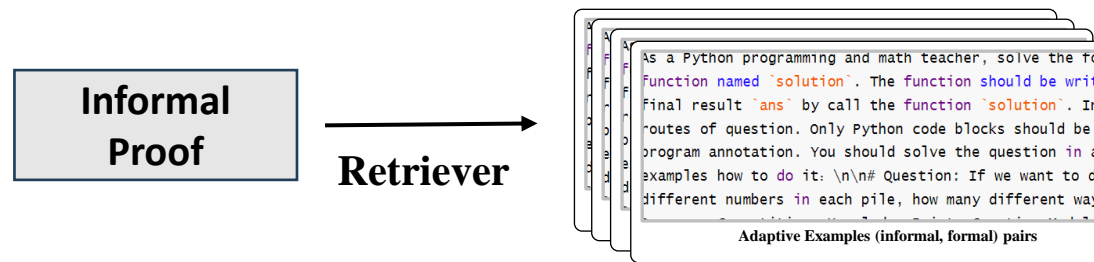


Solution

➤ Details

➤ Retrieve Examples

- Retrieve similar examples from the training set, based on semantics, knowledge points, difficulty level, etc.
- Rank and score examples based on similarity, selecting the top K most relevant examples.
- Concatenate these examples to the prompt for contextual learning, enhancing the LLM's understanding of the task.



Solution

➤ Details

➤ **Generate Codes**

- Input into the LLM: The model will use the provided insights and examples to generate Lean 3 code.

You are a math expert and familiar with Lean 3 formal language. Now please translate the following statement and solution of a math word problem into Lean 3 formal solution. Given an informal problem and its informal solution, analyze the mathematical problem and gain an in-depth understanding of the informal solution, then generate the corresponding formal solution in Lean 3. You should output the code in the ````lean xxx```` tag. Please note that the formal solution should be able to pass the Lean 3 compiler at first, then the informal solution and the formal solution need to be identical.



Solution

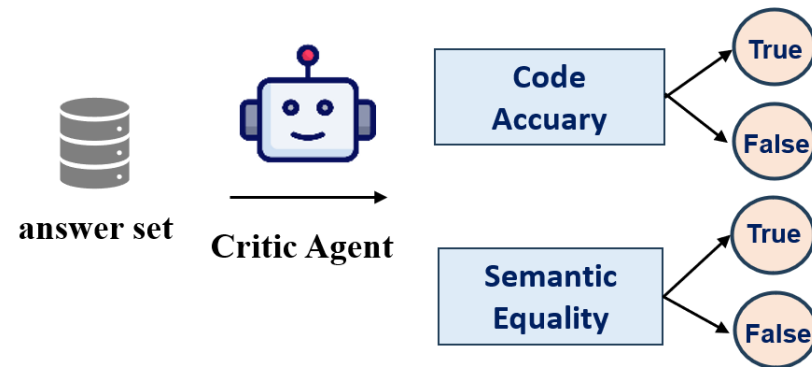
➤ Verify

➤ CRITIC Model

- Code Check: Ensures that the generated code is syntactically correct and can be compiled without errors
- Syntax Check: Verifies that the code logically solves the problem as intended, matching the semantics of the original questions.

➤ Multi-Angle Assessment

- Code Accuracy
- Semantic Accuracy



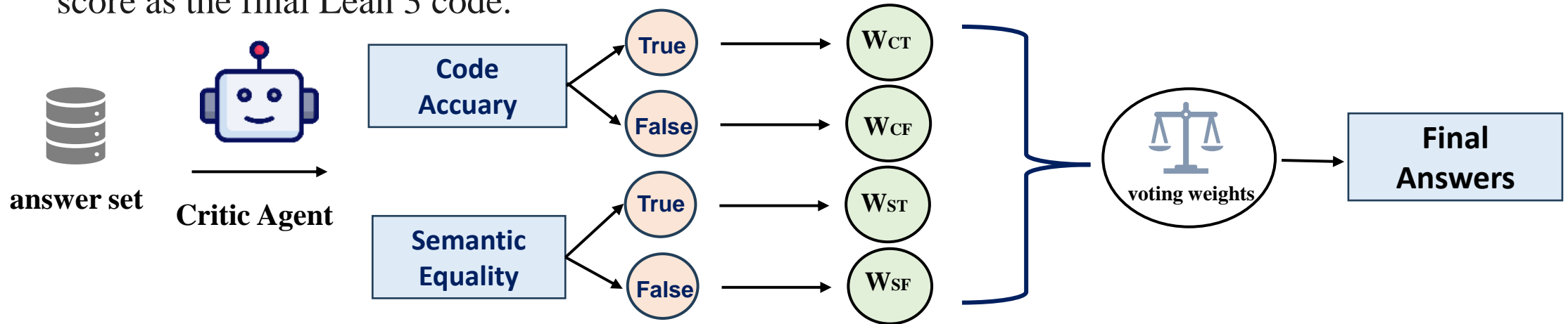
Solution

➤ Details

➤ Multiple sampling

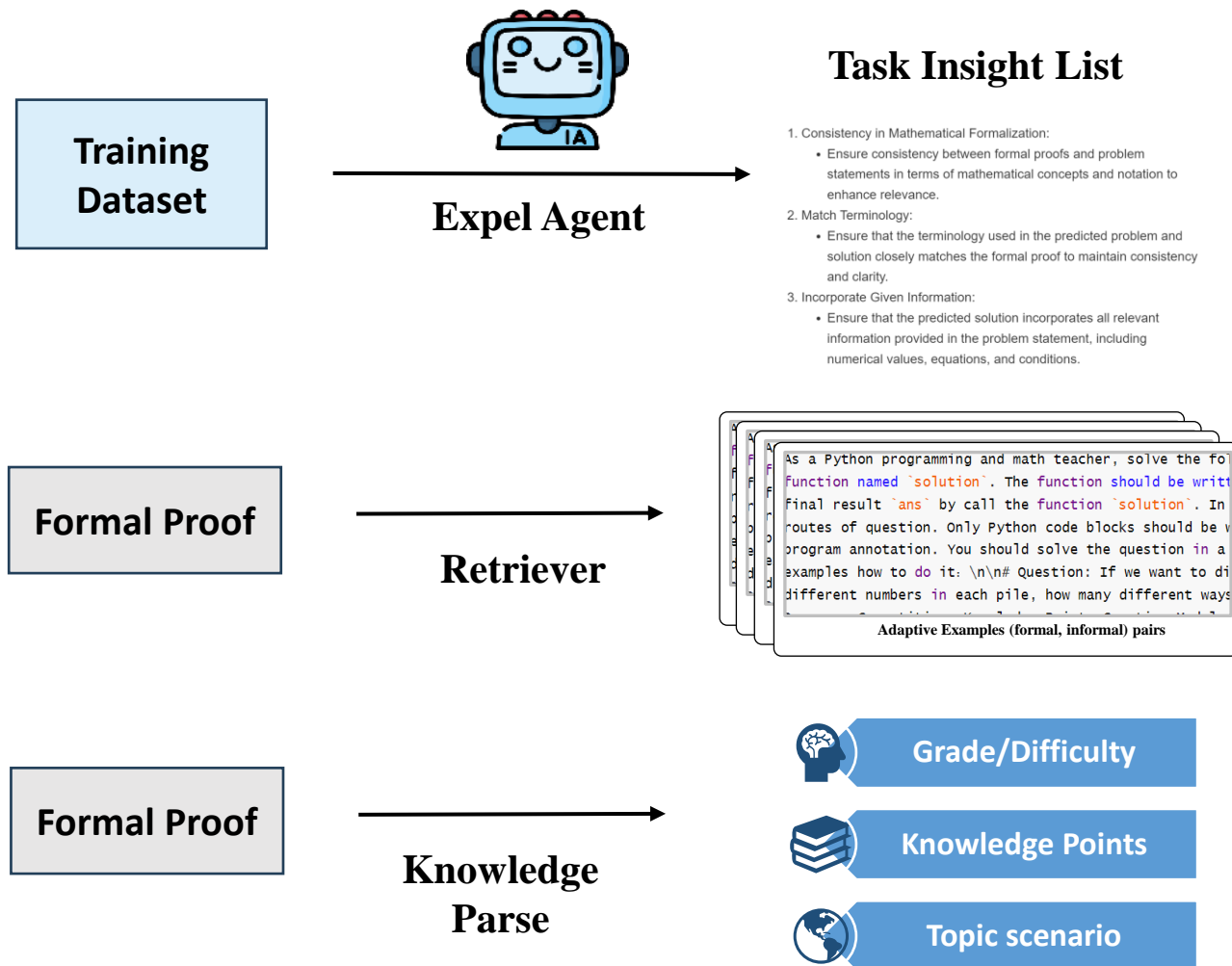
➤ Selecting the best result as the final code

- Select the Best Sample: Compare the scores of all samples and select the one with the highest total score as the final Lean 3 code.

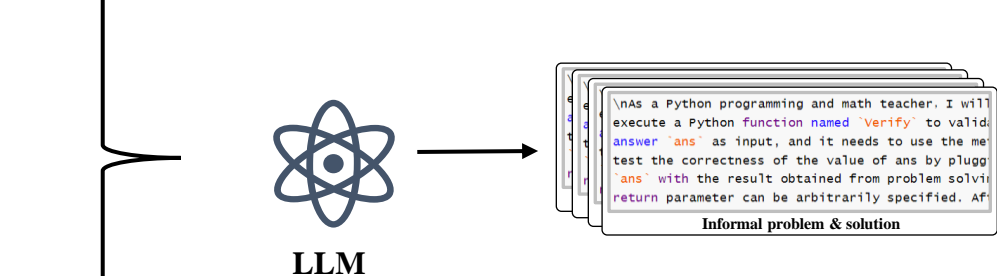


Track 1-2 Solution

➤ Framework



You are a math expert. Now please come up with a math problem according to the following requirements. The math problem should contain a question part (indicated by ``# Problem: ``), a corresponding informal solution in natural language (indicated by ``# Solution: ``), and a corresponding formal solution in Lean 3 (indicated by ``# Formal solution in Lean 3: ``). Now we provide the formal solution in Lean 3, please generate the corresponding informal solution first, then generate the problem. Please note that the informal solution and the formal solution need to be identical.



Outline

1

Background

2

Idea

3

Solution

4

Conclusion

Conclusion

➤ Advantages of Our Method

- We use both RAG and Experience Agent to stimulate the potential of LLM
- We use self-verification **adaptive dynamic voting** to select right results from the output space, which improves the stability

➤ Future Direction

- The automatic conversion between formal and informal proof is challenging for LLMs
- Fine-tuning the LLM to inject mathematical knowledge in order to better accomplish this task.

Q & A



中国科学技术大学
University of Science and Technology of China



认知智能全国重点实验室
STATE KEY LABORATORY OF COGNITIVE INTELLIGENCE

Thanks for your listening!

Reporter: Zhiyuan Ma

zhyma@mail.ustc.edu.cn

<https://bigdata.ustc.edu.cn>



Workshop Organizers



COLLABORATING ORGANIZATIONS